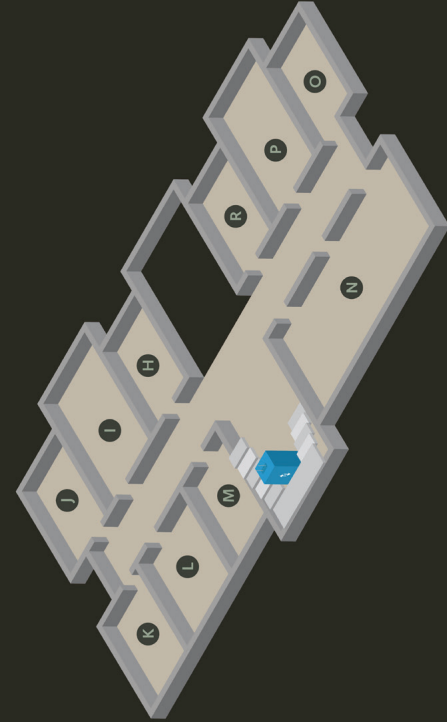


ELBİSTAN MÜZESİ YERLEŞİM PLANI

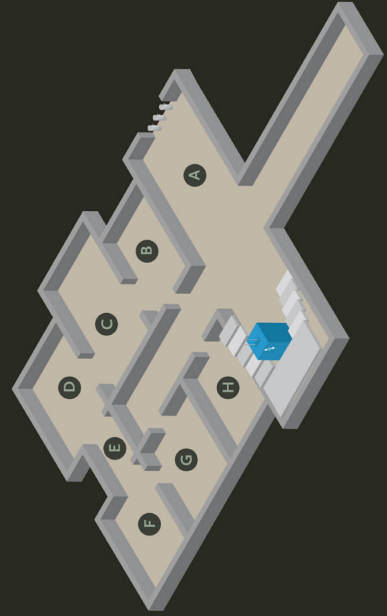
FLOOR PLAN OF ELBİSTAN MUSEUM

İKİNCİ KAT SECOND FLOOR



- I** Elbistan'da Tarım, Hayvancılık ve Sanayi
Husbandry and Industry in Elbistan
- J** Elbistan Coğrafyası ve Sivil Mimari
Geography of Elbistan and the Civil Architecture
- K** Elbistan'da Eğitim
Education in Elbistan
- L** Elbistan'ın Önemli Şahsiyetleri
Significant Persons of Elbistan
- M** Aşık Mahzuni ve Abdurrahim Karakoç
Aşık Mahzuni and Abdurrahim Karakoç
- N** Tarihi Dökümanlar ve Basın Tarihi
Historical Documents and Press History
- O** Geleneksel Meslekler
Traditional Professions
- P** Elbistan'da Gündelik Hayat
Daily Life of Elbistan
- R** Elbistan'ın Yemek Kültürü
Food Culture of Elbistan
- S** Geleneksel Çocuk Oyunları
Traditional Children's Games

BİRİNCİ KAT FIRST FLOOR



- A** Giriş
Entrance
- B** Tarih Öncesi Çağda Elbistan
Elbistan in the Prehistoric Age
- C** Tunç ve Demir Çağları'nda Karahöyük
Karahöyük During the Bronze and Iron Ages
- D** Helenistik ve Roma Dönemleri
Hellenistic and Roman Periods
- E** Göç, Ticaret Yolları ve Sikkeler
Migration, Trade Routes and Coins
- F** Selçuklu Dönemi ve Elbistan Savaşı
Seljuk Period and the Battle of Elbistan
- G** Dulkadroğulları Beyliği ve Osmanlı İmparatorluğu
Beylik of Dulkadir and the Ottoman Empire
- H** Milli Mücadele Dönemi'nde Elbistan
Elbistan During the Turkish War of Independence

Visiting Hours

October 31-April 1

Opening Time: 08:00

Closing Time: 19:00

Ticket Office Closing Time: 18:30

April 1-October 31

Opening Time: 08:00

Kapanış Saati : 17:00

Ticket Office Closing Time: 16:30

Open everyday.

Address: Kızılcaoba Mahallesi, Kışla Caddesi, No: 2 Elbistan/KAHRAMANMARAŞ • Phone: 0344 502 00 44

Please visit the web site for up-to-date information.

[f TurkishMuseums](#)

[i officialturkishmuseums](#)

[t TurkishMuseums](#)

[v TurkishMuseums](#)

[@ TurkishMuseums](#)

www.turkishmuseums.com



www.muze.gov.tr



GENERAL DIRECTORATE FOR
CULTURAL ASSETS AND MUSEUMS

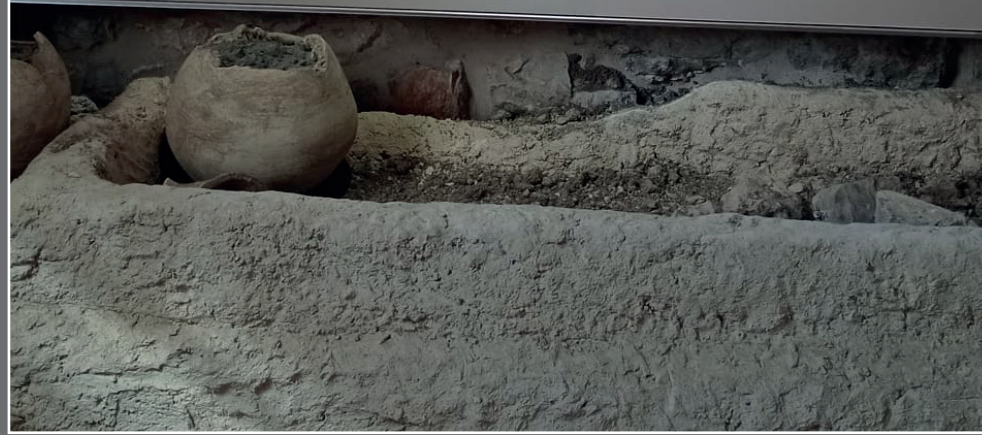
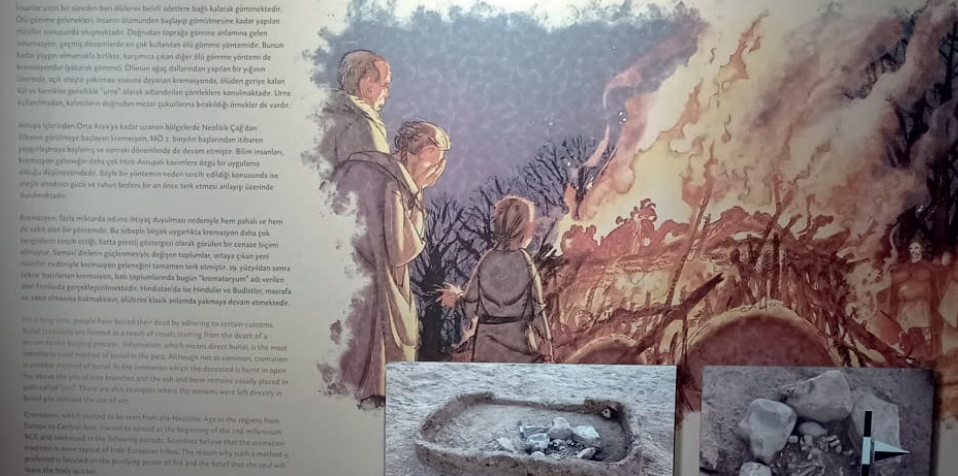


ELBİSTAN CITY

ELBİSTAN FROM THE PAST TO THE PRESENT

Cremation Tradition

KREMASYON GELENEĞİ
CREMATION TRADITION



In the light of the data obtained from the Hamza Tepe excavations, the cremation burial tradition was animated.

Arasta Bazaar



The traditional craftsmanship of the Elbistan District has been revived in the arasta bazaars which are built in accordance with the original.

Battle of Elbistan



The battle scene in the Kalfa Meadow of the Elbistan Plain between the Mamluk army under the leadership of Sultan Baybars and the Mongolian army under the leadership of Tatum Noyan was animated

Great Mosque of Elbistan



The Seljukid Great Mosque, located in the town center of Elbistan, was animated.

Food Culture of Elbistan



The making of the traditional dish of Elbistan, kömbe, has been animated and other traditional dishes are explained with visuals.