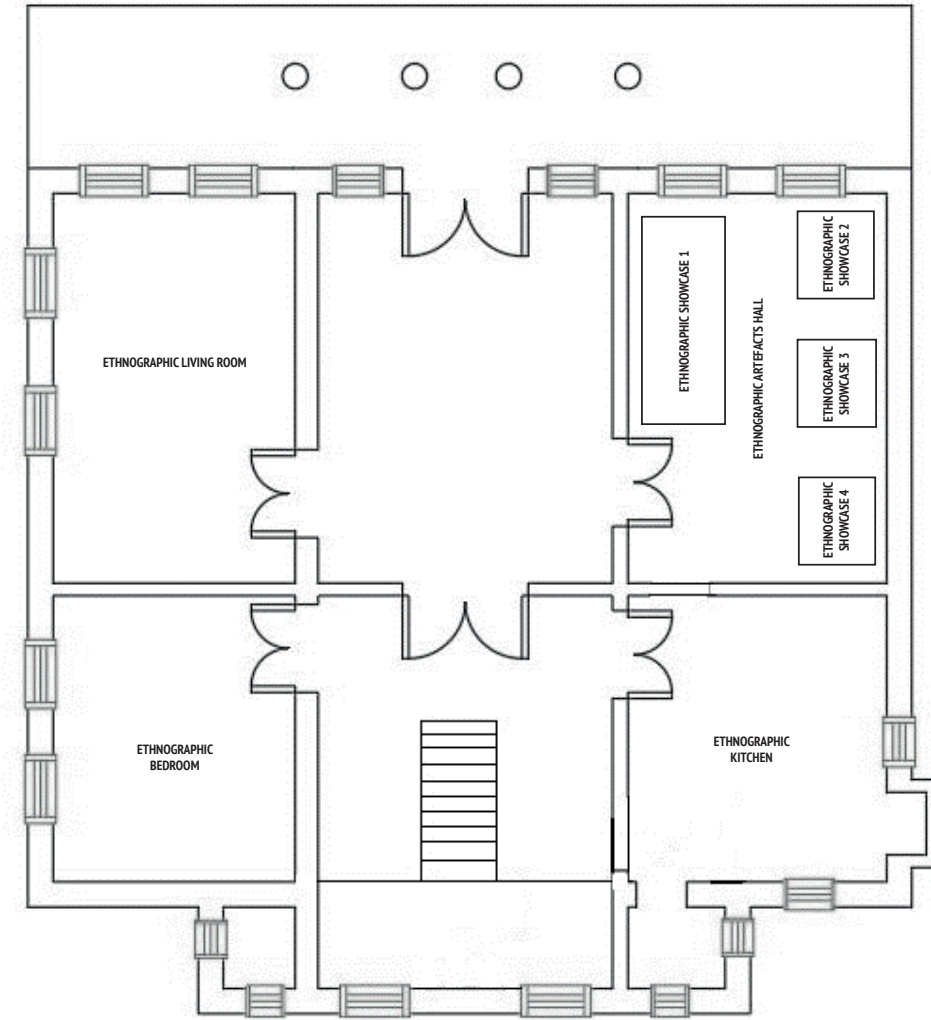


FIRST FLOOR (ARCHAEOLOGICAL ARTEFACTS FLOOR)



GROUND FLOOR (ETHNOGRAPHIC ARTEFACTS FLOOR)



Visiting Hours

Opening Time: 08:00
Closing Time: 17:00

Closed on Monday.

Address: Gazipaşa Mahallesi, Gazipaşa Caddesi, No:11 Bafra/SAMSUN

Please visit the web site for up-to-date information.

[f TurkishMuseums](#)
[@officialturkishmuseums](#)
[t TurkishMuseums](#)
[v TurkishMuseums](#)
[@TurkishMuseums](#)

www.turkishmuseums.com



www.muze.gov.tr



GENERAL DIRECTORATE FOR
NATURAL ASSETS AND MUSEUMS



BAFRA MUSEUM

STORY OF A THOUSAND YEARSSİ



The building, which is an example of civil architecture reflecting the local characteristics, was built in 1858 and has been serving as the Bafra Museum since 2011. Artefacts shedding light on the historical past between 4300 BCE (Ikiztepe Excavation) and the 20th century CE are exhibited in the museum. In the ethnographic halls of the museum, you can see pieces of daily life from the recent history of the Bafra region. In the ethnographic section, there are kitchen, living and bedroom arrangements which are prepared according to the daily life of the traditional Bafra house. In addition, ethnographic artefacts belonging to Turkish culture of the Ottoman Period are found in the showcases.



In the archaeological exhibition halls of the museum, artefacts belonging to civilizations that lived in the Bafra region from the Late Chalcolithic Period layers of İkiiztepe Excavation to the end of the Eastern Roman Period are exhibited.

